

Pop-Facts Demographics - Pop-Facts Demographic Quick Facts

Title Page

Data Version: 2018 Feb (Internal)

Report Generation Method: Single

Analysis Area: 1789 STATE ST, SAN DIEGO, CA, 92101-2530

Reporting Detail: As Selected

Include Map: Yes

Include Labels: Yes

Map Reporting Detail: As Selected

Base Map Style: Claritas Map

Subtotal Method: None

Include Charts: Yes

Analysis Area Detail: No

Report Sections:

Pop-Facts Summary

Pop-Facts Demographic Quick Facts

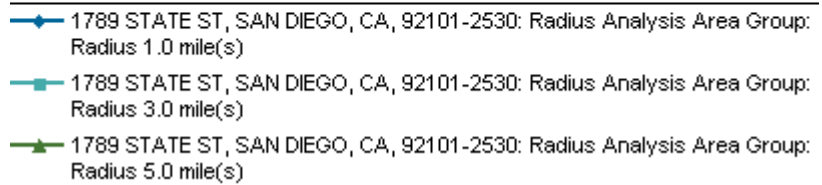
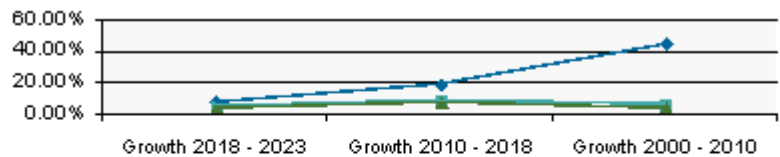
Pop-Facts Demographics - Pop-Facts Demographic Quick Facts

Description	1789 STATE ST, SAN DIEGO, CA, 92101-2530: Radius Analysis Area Group: Radius 1.0 mile(s)		1789 STATE ST, SAN DIEGO, CA, 92101-2530: Radius Analysis Area Group: Radius 3.0 mile(s)		1789 STATE ST, SAN DIEGO, CA, 92101-2530: Radius Analysis Area Group: Radius 5.0 mile(s)	
	Total	%	Total	%	Total	%

Pop-Facts Summary

Population

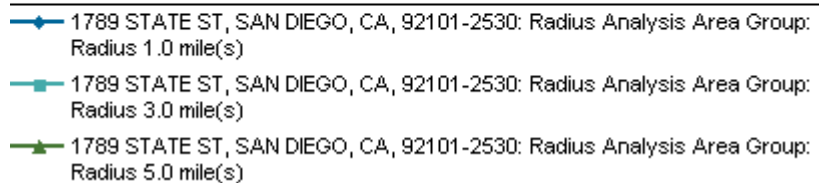
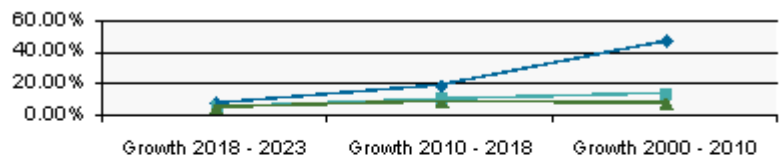
2023 Projection	38,179	194,036	507,659
2018 Estimate	35,486	185,434	488,261
2010 Census	29,911	170,244	455,072
2000 Census	20,732	160,452	437,088



Growth 2018 - 2023	7.59%	4.64%	3.97%
Growth 2010 - 2018	18.64%	8.92%	7.29%
Growth 2000 - 2010	44.27%	6.10%	4.11%

Households

2023 Projection	21,630	92,232	199,230
2018 Estimate	20,043	87,578	190,343
2010 Census	16,895	79,353	175,093
2000 Census	11,497	70,091	163,168



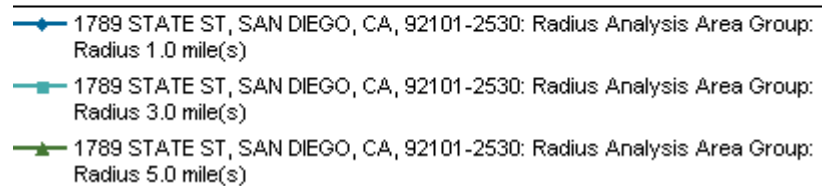
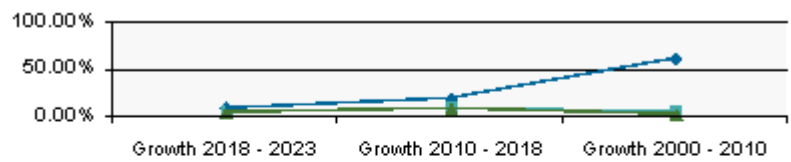
Growth 2018 - 2023	7.91%	5.31%	4.67%
Growth 2010 - 2018	18.63%	10.37%	8.71%

Pop-Facts Demographics - Pop-Facts Demographic Quick Facts

Description	1789 STATE ST, SAN DIEGO, CA, 92101-2530: Radius Analysis Area Group: Radius 1.0 mile(s)		1789 STATE ST, SAN DIEGO, CA, 92101-2530: Radius Analysis Area Group: Radius 3.0 mile(s)		1789 STATE ST, SAN DIEGO, CA, 92101-2530: Radius Analysis Area Group: Radius 5.0 mile(s)	
	Total	%	Total	%	Total	%
Growth 2000 - 2010		46.95%		13.21%		7.31%

Family Households

2023 Projection	5,044	33,339	95,761
2018 Estimate	4,675	31,833	91,907
2010 Census	3,937	29,295	85,652
2000 Census	2,447	28,033	84,263



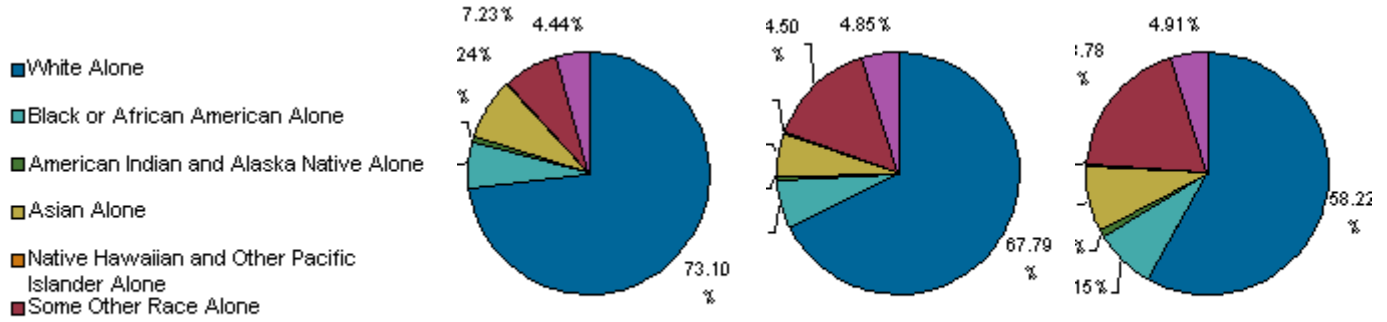
Growth 2018 - 2023		7.89%		4.73%		4.19%
Growth 2010 - 2018		18.76%		8.66%		7.30%
Growth 2000 - 2010		60.86%		4.50%		1.65%

Pop-Facts Demographics - Pop-Facts Demographic Quick Facts

Description	1789 STATE ST, SAN DIEGO, CA, 92101-2530: Radius Analysis Area Group: Radius 1.0 mile(s)		1789 STATE ST, SAN DIEGO, CA, 92101-2530: Radius Analysis Area Group: Radius 3.0 mile(s)		1789 STATE ST, SAN DIEGO, CA, 92101-2530: Radius Analysis Area Group: Radius 5.0 mile(s)	
	Total	%	Total	%	Total	%

Pop-Facts Demographic Quick Facts

2018 Est. Population by Single-Classification Race	35,486	185,434	488,261
--	--------	---------	---------



Race	1.0 mile	%	3.0 miles	%	5.0 miles	%
White Alone	25,939	73.10%	125,711	67.79%	284,257	58.22%
Black or African American Alone	2,197	6.19%	11,417	6.16%	39,815	8.15%
American Indian and Alaska Native Alone	204	0.57%	1,432	0.77%	3,956	0.81%
Asian Alone	2,920	8.23%	10,410	5.61%	42,462	8.70%
Native Hawaiian and Other Pacific Islander Alone	85	0.24%	568	0.31%	2,110	0.43%
Some Other Race Alone	2,564	7.23%	26,896	14.50%	91,679	18.78%
Two or More Races	1,577	4.44%	8,999	4.85%	23,983	4.91%

2018 Est. Population by Ethnicity (Hispanic or Latino)	35,486	185,434	488,261
Hispanic or Latino	6,750	58,002	186,352
Not Hispanic or Latino	28,736	127,432	301,909

2018 Occupied Housing Units by Tenure	20,043	87,578	190,343
Owner-Occupied	5,320	26,128	63,647
Renter-Occupied	14,723	61,450	126,695

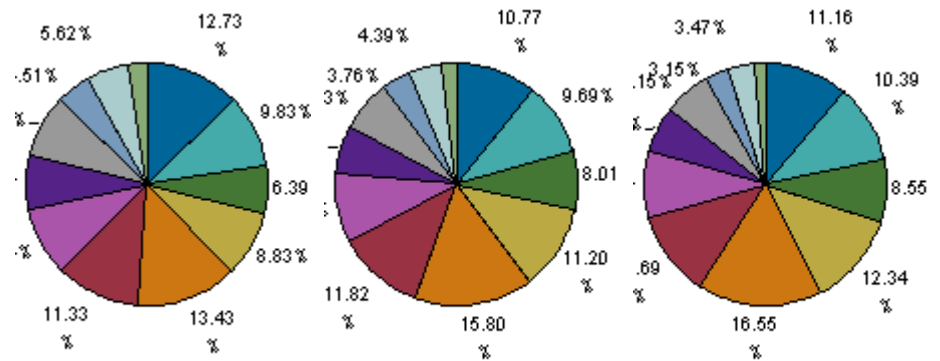
2018 Average Household Size	1.53	1.96	2.36
-----------------------------	------	------	------

2018 Est. Households by Household Income	20,043	87,578	190,343
--	--------	--------	---------

Pop-Facts Demographics - Pop-Facts Demographic Quick Facts

Description	1789 STATE ST, SAN DIEGO, CA, 92101-2530: Radius Analysis Area Group: Radius 1.0 mile(s)		1789 STATE ST, SAN DIEGO, CA, 92101-2530: Radius Analysis Area Group: Radius 3.0 mile(s)		1789 STATE ST, SAN DIEGO, CA, 92101-2530: Radius Analysis Area Group: Radius 5.0 mile(s)	
	Total	%	Total	%	Total	%

- Income < \$15,000
- Income \$15,000 - \$24,999
- Income \$25,000 - \$34,999
- Income \$35,000 - \$49,999
- Income \$50,000 - \$74,999
- Income \$75,000 - \$99,999
- Income \$100,000 - \$124,999
- Income \$125,000 - \$149,999
- Income \$150,000 - \$199,999
- Income \$200,000 - \$249,999
- Income \$250,000 - \$499,999
- Income \$500,000+



Income < \$15,000	2,551	12.73%	9,430	10.77%	21,241	11.16%
Income \$15,000 - \$24,999	1,969	9.83%	8,485	9.69%	19,780	10.39%
Income \$25,000 - \$34,999	1,281	6.39%	7,013	8.01%	16,280	8.55%
Income \$35,000 - \$49,999	1,770	8.83%	9,808	11.20%	23,492	12.34%
Income \$50,000 - \$74,999	2,691	13.43%	13,839	15.80%	31,495	16.55%
Income \$75,000 - \$99,999	2,271	11.33%	10,352	11.82%	22,246	11.69%
Income \$100,000 - \$124,999	1,853	9.24%	8,030	9.17%	16,750	8.80%
Income \$125,000 - \$149,999	1,434	7.15%	5,608	6.40%	11,723	6.16%
Income \$150,000 - \$199,999	1,688	8.42%	6,070	6.93%	11,713	6.15%
Income \$200,000 - \$249,999	904	4.51%	3,297	3.76%	5,992	3.15%
Income \$250,000 - \$499,999	1,126	5.62%	3,843	4.39%	6,599	3.47%
Income \$500,000+	504	2.52%	1,802	2.06%	3,033	1.59%



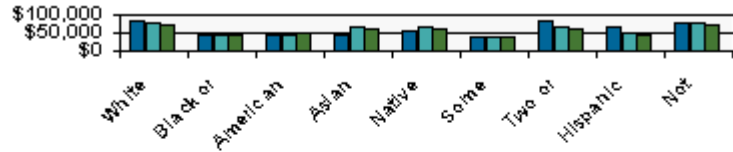
■ 1789 STATE ST, SAN DIEGO, CA, 92101-2530: Radius Analysis Area Group: Radius 1.0 mile(s)
■ 1789 STATE ST, SAN DIEGO, CA, 92101-2530: Radius Analysis Area Group: Radius 3.0 mile(s)
■ 1789 STATE ST, SAN DIEGO, CA, 92101-2530: Radius Analysis Area Group: Radius 5.0 mile(s)

2018 Est. Average Household Income	\$105,638	\$96,580	\$88,431
2018 Est. Median Household Income	\$72,769	\$66,353	\$61,414

2018 Median HH Inc. by Single-Classification Race

Pop-Facts Demographics - Pop-Facts Demographic Quick Facts

Description	1789 STATE ST, SAN DIEGO, CA, 92101-2530: Radius Analysis Area Group: Radius 1.0 mile(s)		1789 STATE ST, SAN DIEGO, CA, 92101-2530: Radius Analysis Area Group: Radius 3.0 mile(s)		1789 STATE ST, SAN DIEGO, CA, 92101-2530: Radius Analysis Area Group: Radius 5.0 mile(s)	
	Total	%	Total	%	Total	%

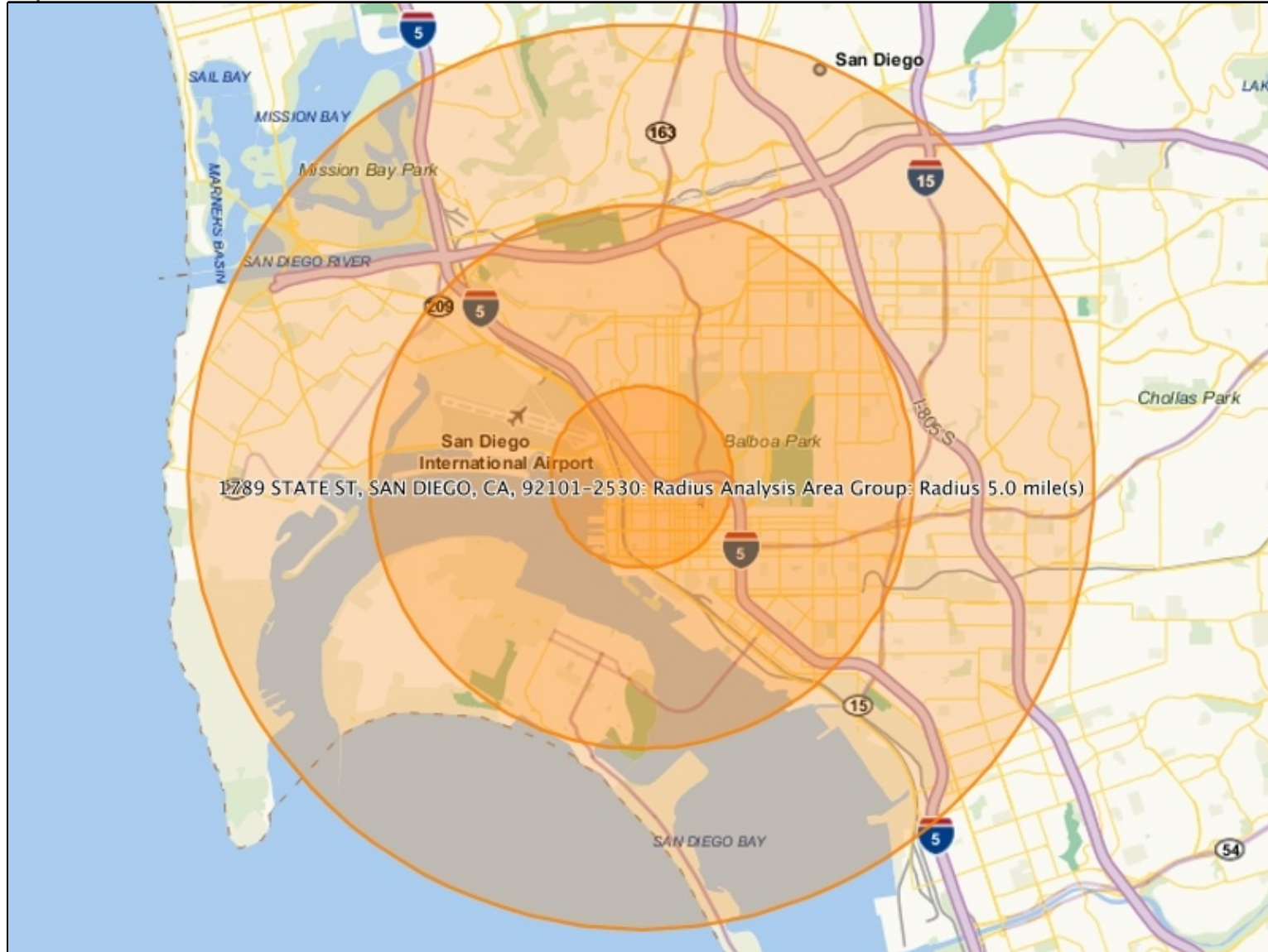


■	1789 STATE ST, SAN DIEGO, CA, 92101-2530: Radius Analysis Area Group: Radius 1.0 mile(s)
■	1789 STATE ST, SAN DIEGO, CA, 92101-2530: Radius Analysis Area Group: Radius 3.0 mile(s)
■	1789 STATE ST, SAN DIEGO, CA, 92101-2530: Radius Analysis Area Group: Radius 5.0 mile(s)

Description	1789 STATE ST, SAN DIEGO, CA, 92101-2530: Radius Analysis Area Group: Radius 1.0 mile(s)	1789 STATE ST, SAN DIEGO, CA, 92101-2530: Radius Analysis Area Group: Radius 3.0 mile(s)	1789 STATE ST, SAN DIEGO, CA, 92101-2530: Radius Analysis Area Group: Radius 5.0 mile(s)
White Alone	\$81,001	\$74,943	\$71,323
Black or African American Alone	\$42,119	\$40,136	\$41,902
American Indian and Alaska Native Alone	\$42,786	\$43,262	\$46,469
Asian Alone	\$42,630	\$63,320	\$59,844
Native Hawaiian and Other Pacific Islander Alone	\$50,477	\$63,494	\$59,602
Some Other Race Alone	\$37,979	\$35,705	\$36,620
Two or More Races	\$81,080	\$61,248	\$60,484
Hispanic or Latino	\$62,624	\$46,125	\$43,378
Not Hispanic or Latino	\$73,773	\$72,330	\$69,825

Pop-Facts Demographics - Pop-Facts Demographic Quick Facts

Map



1789 STATE ST, SAN DIEGO, CA, 92101-2530

- Radius 1.0 mile(s)
- Radius 3.0 mile(s)
- Radius 5.0 mile(s)